



ADDRESS
RESIDENCES
AL MARJAN ISLAND

FLOOR PLANS

EMAAR



ADDRESS
RESIDENCES
AL MARJAN ISLAND

BUILDING 1 - FLOOR PLANS

EMAAR



ADDRESS RESIDENCES AL MARJAN ISLAND

BUILDING 1

PENTHOUSE TYPE 1

LEVEL 17

UNIT 02

SUITE AREA	2540.18 SQ.FT.	235.99 SQ.M.
BALCONY AREA	358.01 SQ.FT.	33.26 SQ.M.
TOTAL AREA	2898.19 SQ.FT.	269.25 SQ.M.

KEY PLAN LEVEL
LEVEL 17

KEY SECTION



Disclaimer : All dimensions are in imperial and metric, and measured from finish to finish excluding construction tolerances. 2. All materials, dimensions, and drawings are approximate only. 3. Information is subject to change without notice, at developer's absolute discretion. 4. Actual area may vary from the stated area. 5. Drawings not to scale. 6. All images used are for illustrative purposes only and do not represent the actual size, features, specifications, fittings, and furnishings. 7. The developer reserves the right to make revisions / alterations, at its absolute discretion, without any liability whatsoever.



ADDRESS RESIDENCES AL MARJAN ISLAND

BUILDING 1

PENTHOUSE TYPE 1A

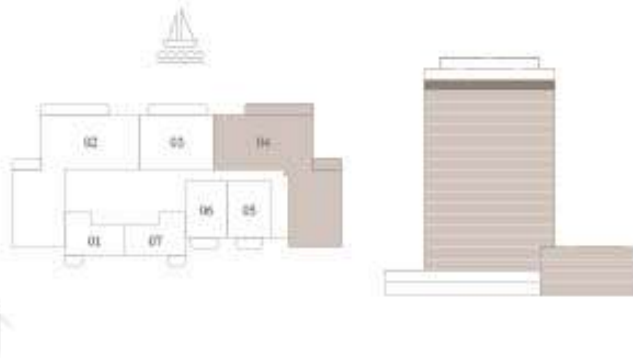
LEVEL 17

UNIT 04

SUITE AREA	2538.35 SQ.FT.	235.82 SQ.M.
BALCONY AREA	358.01 SQ.FT.	33.26 SQ.M.
TOTAL AREA	2896.36 SQ.FT.	269.08 SQ.M.

KEY PLAN LEVEL
LEVEL 17

KEY SECTION



Disclaimer : All dimensions are in imperial and metric, and measured from finish to finish excluding construction tolerances. 2. All materials, dimensions, and drawings are approximate only. 3. Information is subject to change without notice, at developer's absolute discretion. 4. Actual area may vary from the stated area. 5. Drawings not to scale. 6. All images used are for illustrative purposes only and do not represent the actual size, features, specifications, fittings, and furnishings. 7. The developer reserves the right to make revisions / alterations, at its absolute discretion, without any liability whatsoever.