

TYPE - A

DUPLIX

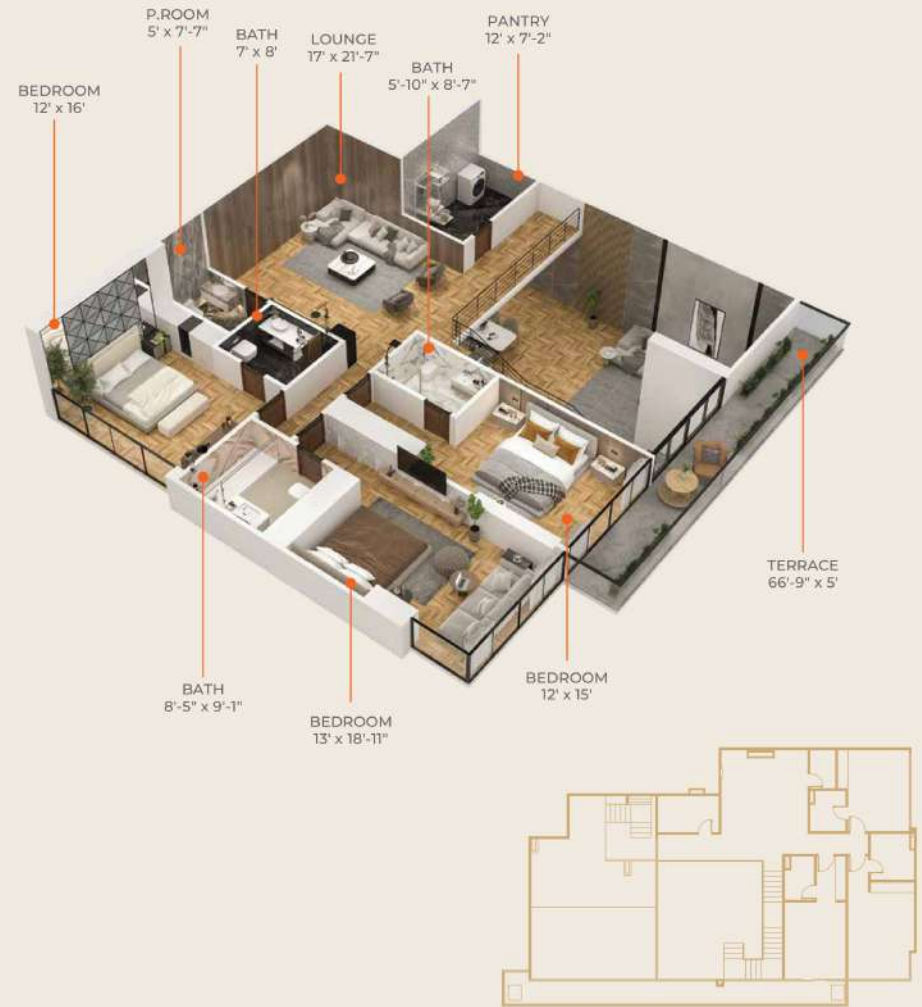
LOWER APARTMENT



TYPE - A

DUPLIX

UPPER APARTMENT





TYPE XL-5
LOWER LEVEL DUPLEX



TYPE XL-5
UPPER LEVEL DUPLEX

GOLDCREST BAY SANDS PAYMENT PLAN DUPLEX

MODE OF PAYMENT	AMOUNT
ON BOOKING - OCTOBER 2023	9,000,000
NOVEMBER 2023	9,000,000
DECEMBER 2023	9,000,000
JANUARY 2024	9,000,000
18 QUARTERLY INSTALLMENTS (PKR 7,000,000 X 18) STARTING FROM APRIL 2024	126,000,000
ON POSSESSION	18,000,000
TOTAL	180,000,000