



ADDRESS  
RESIDENCES  
AL MARJAN ISLAND

---

FLOOR PLANS

---

EMAAR





ADDRESS  
RESIDENCES  
AL MARJAN ISLAND

---

BUILDING 1 - FLOOR PLANS

---

EMAAR



# ADDRESS RESIDENCES AL MARJAN ISLAND

BUILDING 1

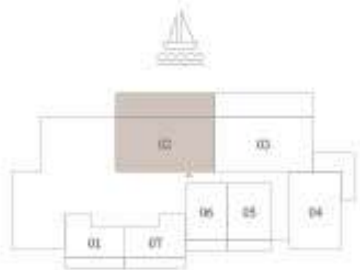
## 3 BEDROOM TYPE 1

LEVEL 1

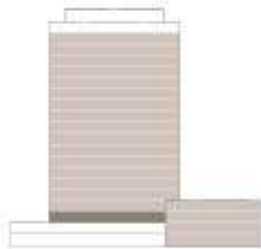
UNIT 02

SUITE AREA	1432.03 SQ.FT.	133.04 SQ.M.
BALCONY AREA	662.63 SQ.FT.	61.56 SQ.M.
TOTAL AREA	2094.66 SQ.FT.	194.60 SQ.M.

KEY PLAN LEVEL  
LEVEL 1



KEY SECTION



Disclaimer : All dimensions are in imperial and metric, and measured from finish to finish excluding construction tolerances. 2. All materials, dimensions, and drawings are approximate only. 3. Information is subject to change without notice, at developer's absolute discretion. 4. Actual area may vary from the stated area. 5. Drawings not to scale. 6. All images used are for illustrative purposes only and do not represent the actual size, features, specifications, fittings, and furnishings. 7. The developer reserves the right to make revisions / alterations, at its absolute discretion, without any liability whatsoever.





# ADDRESS RESIDENCES AL MARJAN ISLAND

BUILDING 1

## 3 BEDROOM TYPE 2

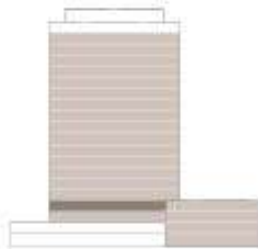
LEVEL 2

UNIT 03

SUITE AREA	1432.03 SQ.FT.	133.04 SQ.M.
BALCONY AREA	226.90 SQ.FT.	21.08 SQ.M.
TOTAL AREA	1658.93 SQ.FT.	154.12 SQ.M.

KEY PLAN LEVEL  
LEVEL 2

KEY SECTION



Disclaimer : All dimensions are in imperial and metric, and measured from finish to finish excluding construction tolerances. 2. All materials, dimensions, and drawings are approximate only. 3. Information is subject to change without notice, at developer's absolute discretion. 4. Actual area may vary from the stated area. 5. Drawings not to scale. 6. All images used are for illustrative purposes only and do not represent the actual size, features, specifications, fittings, and furnishings. 7. The developer reserves the right to make revisions / alterations, at it's absolute discretion, without any liability whatsoever.



# ADDRESS RESIDENCES AL MARJAN ISLAND

BUILDING 1

## 3 BEDROOM TYPE 3

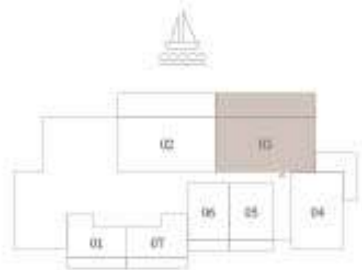
LEVEL 1

UNIT 03

SUITE AREA	1482.73 SQ.FT.	137.75 SQ.M.
BALCONY AREA	676.94 SQ.FT.	62.89 SQ.M.
TOTAL AREA	2159.67 SQ.FT.	200.64 SQ.M.

KEY PLAN LEVEL  
LEVEL 1

KEY SECTION



Disclaimer : All dimensions are in imperial and metric, and measured from finish to finish excluding construction tolerances. 2. All materials, dimensions, and drawings are approximate only. 3. Information is subject to change without notice, at developer's absolute discretion. 4. Actual area may vary from the stated area. 5. Drawings not to scale. 6. All images used are for illustrative purposes only and do not represent the actual size, features, specifications, fittings, and furnishings. 7. The developer reserves the right to make revisions / alterations, at its absolute discretion, without any liability whatsoever.



# ADDRESS RESIDENCES AL MARJAN ISLAND

BUILDING 1

## 3 BEDROOM TYPE 4

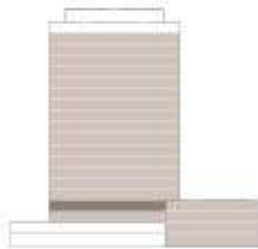
LEVEL 2

UNIT 04

SUITE AREA	1482.73 SQ.FT.	137.75 SQ.M.
BALCONY AREA	246.06 SQ.FT.	22.86 SQ.M.
TOTAL AREA	1728.79 SQ.FT.	160.61 SQ.M.

KEY PLAN LEVEL  
LEVEL 2

KEY SECTION



Disclaimer : All dimensions are in imperial and metric, and measured from finish to finish excluding construction tolerances. 2. All materials, dimensions, and drawings are approximate only. 3. Information is subject to change without notice, at developer's absolute discretion. 4. Actual area may vary from the stated area. 5. Drawings not to scale. 6. All images used are for illustrative purposes only and do not represent the actual size, features, specifications, fittings, and furnishings. 7. The developer reserves the right to make revisions / alterations, at its absolute discretion, without any liability whatsoever.



# ADDRESS RESIDENCES AL MARJAN ISLAND

BUILDING 1

## 3 BEDROOM TYPE 4

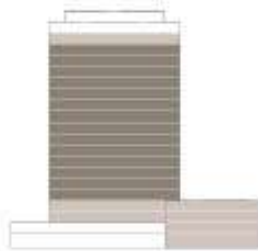
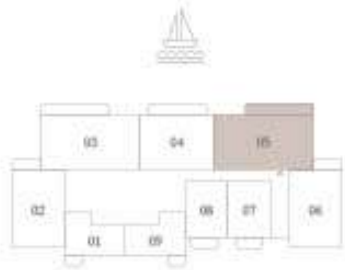
LEVELS 3 TO 16

UNIT 05

SUITE AREA	1482.73 SQ.FT.	137.75 SQ.M.
BALCONY AREA	246.06 SQ.FT.	22.86 SQ.M.
TOTAL AREA	1728.79 SQ.FT.	160.61 SQ.M.

KEY PLAN LEVEL  
LEVELS 3 TO 16

KEY SECTION



Disclaimer : All dimensions are in imperial and metric, and measured from finish to finish excluding construction tolerances. 2. All materials, dimensions, and drawings are approximate only. 3. Information is subject to change without notice, at developer's absolute discretion. 4. Actual area may vary from the stated area. 5. Drawings not to scale. 6. All images used are for illustrative purposes only and do not represent the actual size, features, specifications, fittings, and furnishings. 7. The developer reserves the right to make revisions / alterations, at its absolute discretion, without any liability whatsoever.





# ADDRESS RESIDENCES AL MARJAN ISLAND

BUILDING 1

## 3 BEDROOM TYPE 4A

LEVELS 3 TO 16

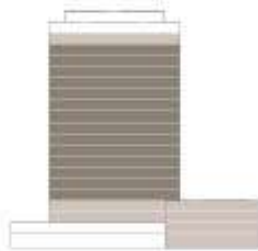
UNIT 03

SUITE AREA	1482.73 SQ.FT.	137.75 SQ.M.
BALCONY AREA	246.06 SQ.FT.	22.86 SQ.M.
TOTAL AREA	1728.79 SQ.FT.	160.61 SQ.M.

KEY PLAN LEVEL  
LEVELS 3 TO 16



KEY SECTION



Disclaimer : All dimensions are in imperial and metric, and measured from finish to finish excluding construction tolerances. 2. All materials, dimensions, and drawings are approximate only. 3. Information is subject to change without notice, at developer's absolute discretion. 4. Actual area may vary from the stated area. 5. Drawings not to scale. 6. All images used are for illustrative purposes only and do not represent the actual size, features, specifications, fittings, and furnishings. 7. The developer reserves the right to make revisions / alterations, at its absolute discretion, without any liability whatsoever.