



ADDRESS  
RESIDENCES  
AL MARJAN ISLAND

---

FLOOR PLANS

---

EMAAR





ADDRESS  
RESIDENCES  
AL MARJAN ISLAND

---

BUILDING 1 - FLOOR PLANS

---

EMAAR



# ADDRESS RESIDENCES AL MARJAN ISLAND

BUILDING 1

## 1 BEDROOM TYPE 1

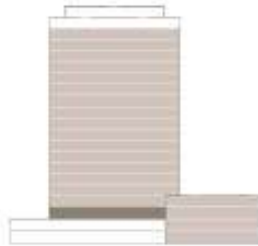
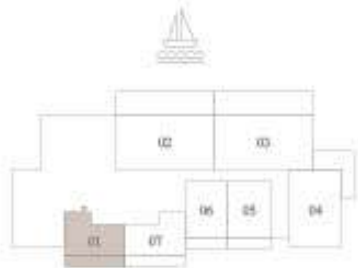
LEVEL 1

UNIT 01

SUITE AREA	594.49 SQ.FT.	55.23 SQ.M.
BALCONY AREA	196.87 SQ.FT.	18.29 SQ.M.
TOTAL AREA	791.36 SQ.FT.	73.52 SQ.M.

KEY PLAN LEVEL  
LEVEL 1

KEY SECTION



Disclaimer : All dimensions are in imperial and metric, and measured from finish to finish excluding construction tolerances. 2. All materials, dimensions, and drawings are approximate only. 3. Information is subject to change without notice, at developer's absolute discretion. 4. Actual area may vary from the stated area. 5. Drawings not to scale. 6. All images used are for illustrative purposes only and do not represent the actual size, features, specifications, fittings, and furnishings. 7. The developer reserves the right to make revisions / alterations, at it's absolute discretion, without any liability whatsoever.

EMAAR



# ADDRESS RESIDENCES AL MARJAN ISLAND

BUILDING 1

## 1 BEDROOM TYPE 1A

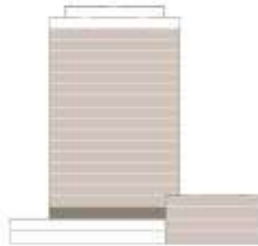
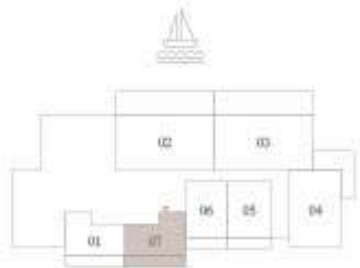
LEVEL 1

UNIT 07

SUITE AREA	603.32 SQ.FT.	56.05 SQ.M.
BALCONY AREA	195.90 SQ.FT.	18.20 SQ.M.
TOTAL AREA	799.22 SQ.FT.	74.25 SQ.M.

KEY PLAN LEVEL  
LEVEL 1

KEY SECTION



Disclaimer : All dimensions are in imperial and metric, and measured from finish to finish excluding construction tolerances. 2. All materials, dimensions, and drawings are approximate only. 3. Information is subject to change without notice, at developer's absolute discretion. 4. Actual area may vary from the stated area. 5. Drawings not to scale. 6. All images used are for illustrative purposes only and do not represent the actual size, features, specifications, fittings, and furnishings. 7. The developer reserves the right to make revisions / alterations, at it's absolute discretion, without any liability whatsoever.

EMAAR





# ADDRESS RESIDENCES AL MARJAN ISLAND

BUILDING 1

## 1 BEDROOM TYPE 2

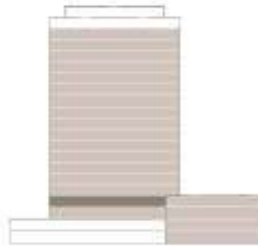
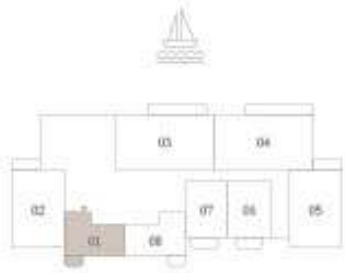
LEVEL 2

UNIT 01

SUITE AREA	604.50 SQ.FT.	56.16 SQ.M.
BALCONY AREA	55.43 SQ.FT.	5.15 SQ.M.
TOTAL AREA	659.93 SQ.FT.	61.31 SQ.M.

KEY PLAN LEVEL  
LEVEL 2

KEY SECTION



Disclaimer : All dimensions are in imperial and metric, and measured from finish to finish excluding construction tolerances. 2. All materials, dimensions, and drawings are approximate only. 3. Information is subject to change without notice, at developer's absolute discretion. 4. Actual area may vary from the stated area. 5. Drawings not to scale. 6. All images used are for illustrative purposes only and do not represent the actual size, features, specifications, fittings, and furnishings. 7. The developer reserves the right to make revisions / alterations, at it's absolute discretion, without any liability whatsoever.

EMAAR



# ADDRESS RESIDENCES AL MARJAN ISLAND

BUILDING 1

## 1 BEDROOM TYPE 2A

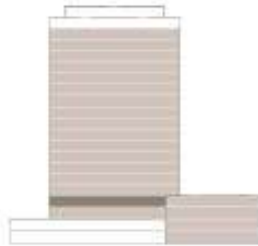
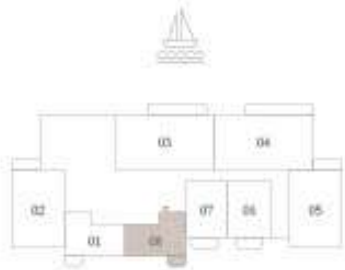
LEVEL 2

UNIT 08

SUITE AREA	603.32 SQ.FT.	56.05 SQ.M.
BALCONY AREA	55.43 SQ.FT.	5.15 SQ.M.
TOTAL AREA	658.75 SQ.FT.	61.20 SQ.M.

KEY PLAN LEVEL  
LEVEL 2

KEY SECTION



Disclaimer : All dimensions are in imperial and metric, and measured from finish to finish excluding construction tolerances. 2. All materials, dimensions, and drawings are approximate only. 3. Information is subject to change without notice, at developer's absolute discretion. 4. Actual area may vary from the stated area. 5. Drawings not to scale. 6. All images used are for illustrative purposes only and do not represent the actual size, features, specifications, fittings, and furnishings. 7. The developer reserves the right to make revisions / alterations, at it's absolute discretion, without any liability whatsoever.

EMAAR



# ADDRESS RESIDENCES AL MARJAN ISLAND

BUILDING 1

## 1 BEDROOM TYPE 2

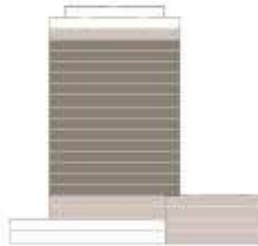
LEVELS 3 TO 16

UNIT 01

SUITE AREA	604.50 SQ.FT.	56.16 SQ.M.
BALCONY AREA	55.43 SQ.FT.	5.15 SQ.M.
TOTAL AREA	659.93 SQ.FT.	61.31 SQ.M.

KEY PLAN LEVEL  
LEVELS 3 TO 16

KEY SECTION



Disclaimer : All dimensions are in imperial and metric, and measured from finish to finish excluding construction tolerances. 2. All materials, dimensions, and drawings are approximate only. 3. Information is subject to change without notice, at developer's absolute discretion. 4. Actual area may vary from the stated area. 5. Drawings not to scale. 6. All images used are for illustrative purposes only and do not represent the actual size, features, specifications, fittings, and furnishings. 7. The developer reserves the right to make revisions / alterations, at it's absolute discretion, without any liability whatsoever.

EMAAR



# ADDRESS RESIDENCES AL MARJAN ISLAND

BUILDING 1

## 1 BEDROOM TYPE 2A

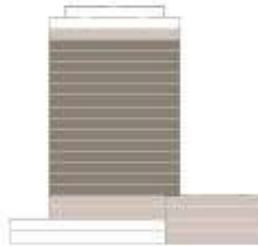
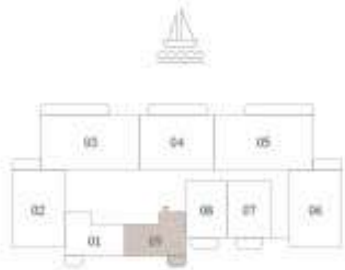
LEVELS 3 TO 16

UNIT 09

SUITE AREA	603.32 SQ.FT.	56.05 SQ.M.
BALCONY AREA	55.43 SQ.FT.	5.15 SQ.M.
TOTAL AREA	658.75 SQ.FT.	61.20 SQ.M.

KEY PLAN LEVEL  
LEVELS 3 TO 16

KEY SECTION



Disclaimer : All dimensions are in imperial and metric, and measured from finish to finish excluding construction tolerances. 2. All materials, dimensions, and drawings are approximate only. 3. Information is subject to change without notice, at developer's absolute discretion. 4. Actual area may vary from the stated area. 5. Drawings not to scale. 6. All images used are for illustrative purposes only and do not represent the actual size, features, specifications, fittings, and furnishings. 7. The developer reserves the right to make revisions / alterations, at it's absolute discretion, without any liability whatsoever.

EMAAR





# ADDRESS RESIDENCES AL MARJAN ISLAND

BUILDING 1

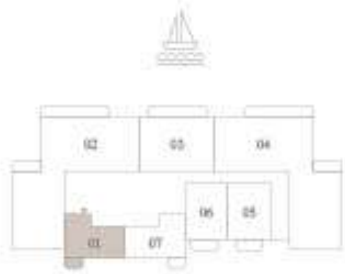
## 1 BEDROOM TYPE 2

LEVEL 17

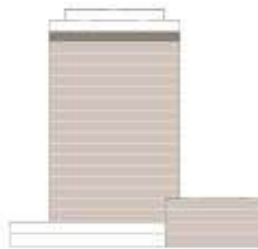
UNIT 01

SUITE AREA	604.50 SQ.FT.	56.16 SQ.M.
BALCONY AREA	55.43 SQ.FT.	5.15 SQ.M.
TOTAL AREA	659.93 SQ.FT.	61.31 SQ.M.

KEY PLAN LEVEL  
LEVEL 17



KEY SECTION



Disclaimer : All dimensions are in imperial and metric, and measured from finish to finish excluding construction tolerances. 2. All materials, dimensions, and drawings are approximate only. 3. Information is subject to change without notice, at developer's absolute discretion. 4. Actual area may vary from the stated area. 5. Drawings not to scale. 6. All images used are for illustrative purposes only and do not represent the actual size, features, specifications, fittings, and furnishings. 7. The developer reserves the right to make revisions / alterations, at it's absolute discretion, without any liability whatsoever.

EMAAR



# ADDRESS RESIDENCES AL MARJAN ISLAND

BUILDING 1

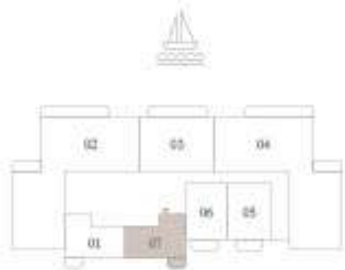
## 1 BEDROOM TYPE 2A

LEVEL 17

UNIT 07

SUITE AREA	603.32 SQ.FT.	56.05 SQ.M.
BALCONY AREA	55.43 SQ.FT.	5.15 SQ.M.
TOTAL AREA	658.75 SQ.FT.	61.20 SQ.M.

KEY PLAN LEVEL  
LEVEL 17



KEY SECTION



Disclaimer : All dimensions are in imperial and metric, and measured from finish to finish excluding construction tolerances. 2. All materials, dimensions, and drawings are approximate only. 3. Information is subject to change without notice, at developer's absolute discretion. 4. Actual area may vary from the stated area. 5. Drawings not to scale. 6. All images used are for illustrative purposes only and do not represent the actual size, features, specifications, fittings, and furnishings. 7. The developer reserves the right to make revisions / alterations, at it's absolute discretion, without any liability whatsoever.

EMAAR



# ADDRESS RESIDENCES AL MARJAN ISLAND

BUILDING 1

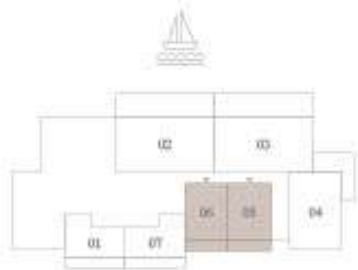
## 1 BEDROOM TYPE 3

LEVEL 1		UNIT 05
SUITE AREA	665.42 SQ.FT.	61.82 SQ.M.
BALCONY AREA	137.46 SQ.FT.	12.77 SQ.M.
TOTAL AREA	802.88 SQ.FT.	74.59 SQ.M.

LEVEL 1		UNIT 06
SUITE AREA	672.21 SQ.FT.	62.45 SQ.M.
BALCONY AREA	138.42 SQ.FT.	12.86 SQ.M.
TOTAL AREA	810.63 SQ.FT.	75.31 SQ.M.

KEY PLAN LEVEL  
LEVEL 1



KEY SECTION



Disclaimer : All dimensions are in imperial and metric, and measured from finish to finish excluding construction tolerances. 2. All materials, dimensions, and drawings are approximate only. 3. Information is subject to change without notice, at developer's absolute discretion. 4. Actual area may vary from the stated area. 5. Drawings not to scale. 6. All images used are for illustrative purposes only and do not represent the actual size, features, specifications, fittings, and furnishings. 7. The developer reserves the right to make revisions / alterations, at its absolute discretion, without any liability whatsoever.





# ADDRESS RESIDENCES AL MARJAN ISLAND

BUILDING 1

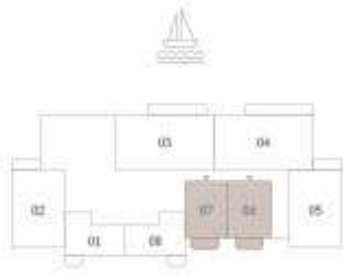
## 1 BEDROOM TYPE 4

LEVEL 2		UNIT 06
SUITE AREA	665.42 SQ.FT.	61.82 SQ.M.
BALCONY AREA	93.86 SQ.FT.	8.72 SQ.M.
TOTAL AREA	759.28 SQ.FT.	70.54 SQ.M.

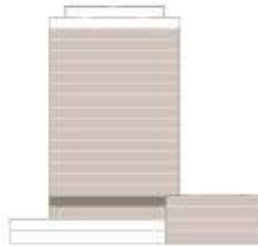
  

LEVEL 2		UNIT 07
SUITE AREA	672.21 SQ.FT.	62.45 SQ.M.
BALCONY AREA	93.86 SQ.FT.	8.72 SQ.M.
TOTAL AREA	766.07 SQ.FT.	71.17 SQ.M.

KEY PLAN LEVEL  
LEVEL 2



KEY SECTION



Disclaimer : All dimensions are in imperial and metric, and measured from finish to finish excluding construction tolerances. 2. All materials, dimensions, and drawings are approximate only. 3. Information is subject to change without notice, at developer's absolute discretion. 4. Actual area may vary from the stated area. 5. Drawings not to scale. 6. All images used are for illustrative purposes only and do not represent the actual size, features, specifications, fittings, and furnishings. 7. The developer reserves the right to make revisions / alterations, at its absolute discretion, without any liability whatsoever.



# ADDRESS RESIDENCES AL MARJAN ISLAND

BUILDING 1

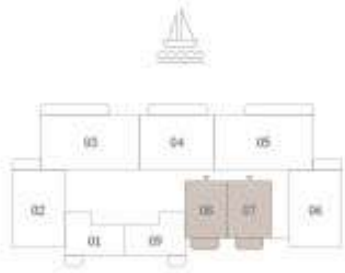
## 1 BEDROOM TYPE 4

LEVELS 3 TO 16		UNIT 07
SUITE AREA	665.42 SQ.FT.	61.82 SQ.M.
BALCONY AREA	93.86 SQ.FT.	8.72 SQ.M.
TOTAL AREA	759.28 SQ.FT.	70.54 SQ.M.

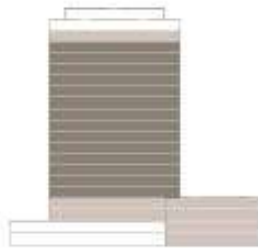
  

LEVELS 3 TO 16		UNIT 08
SUITE AREA	672.21 SQ.FT.	62.45 SQ.M.
BALCONY AREA	93.86 SQ.FT.	8.72 SQ.M.
TOTAL AREA	766.07 SQ.FT.	71.17 SQ.M.

KEY PLAN LEVEL  
LEVELS 3 TO 16



KEY SECTION



Disclaimer : All dimensions are in imperial and metric, and measured from finish to finish excluding construction tolerances. 2. All materials, dimensions, and drawings are approximate only. 3. Information is subject to change without notice, at developer's absolute discretion. 4. Actual area may vary from the stated area. 5. Drawings not to scale. 6. All images used are for illustrative purposes only and do not represent the actual size, features, specifications, fittings, and furnishings. 7. The developer reserves the right to make revisions / alterations, at its absolute discretion, without any liability whatsoever.



# ADDRESS RESIDENCES AL MARJAN ISLAND

BUILDING 1

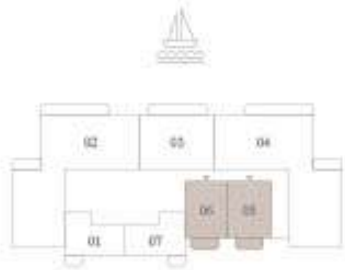
## 1 BEDROOM TYPE 4

LEVEL 17		UNIT 05
SUITE AREA	665.42 SQ.FT.	61.82 SQ.M.
BALCONY AREA	93.86 SQ.FT.	8.72 SQ.M.
TOTAL AREA	759.28 SQ.FT.	70.54 SQ.M.

LEVEL 17		UNIT 06
SUITE AREA	672.21 SQ.FT.	62.45 SQ.M.
BALCONY AREA	93.86 SQ.FT.	8.72 SQ.M.
TOTAL AREA	766.07 SQ.FT.	71.17 SQ.M.

KEY PLAN LEVEL  
LEVEL 17



KEY SECTION



Disclaimer : All dimensions are in imperial and metric, and measured from finish to finish excluding construction tolerances. 2. All materials, dimensions, and drawings are approximate only. 3. Information is subject to change without notice, at developer's absolute discretion. 4. Actual area may vary from the stated area. 5. Drawings not to scale. 6. All images used are for illustrative purposes only and do not represent the actual size, features, specifications, fittings, and furnishings. 7. The developer reserves the right to make revisions / alterations, at its absolute discretion, without any liability whatsoever.

EMAAR